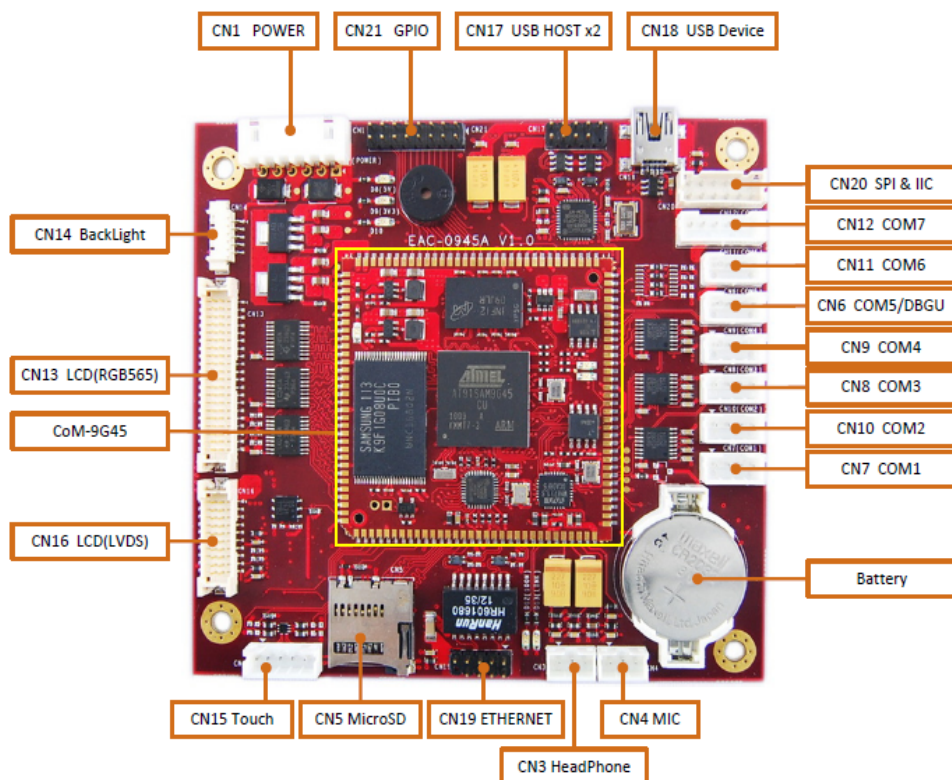


EAC-0945

Series of Embedded ARM Single board computer



Features

- ARM926EJ-S CPU、 400MHz Processor core
- 64MB DDR2 RAM, 128MB SLC Nand
- Interfaces:Ethernet,2xUSB 2.0host, 6xUSART,MicroSD, LCD/LVDS/TFT, IIC,SPI, I/O ports
- WM8731L 24BIT AUDIO
- IS1208 RTC WITH BATTERY
- OS Linux2.6 /wince 6.0 pre-installed
- SIZE:96x90MM(PC104 Standard)

Embedall Inc

www.embedall.com

address: Room 12A06, Leizhen Building, No.40 Fuming Road, Futian District, Shenzhen, China

email: info@embedall.com

fax: 0086-755-82523090

tel: 0086-755-82523090

Introduction

Industrial Design, I/O intensive COM

EAC-0945 Embedded ARM Computer(EAC) integrates ARM ARM926EJ-S 400MHz ATMEL AT91SAM9G45B ultra low power SoC and I/O solution chips to be WindowsCE 6.0 and Linux 2.6 solution-ready! EAC-0945 with 3.3V I/O Voltage current and wide-range temperature support is specially designed for industrial applications.

Design-in Package Ensures Efficient Evaluation and Implementation

The Design-in Package not only includes all the necessary H/W boards, fixtures and LCD related cables, but also includes the Artcor-customized API, utility & reference codes. And of course, it includes all design related documentation including a white paper for detailed technical know-how.

LCD Kit: Includes the LCD, T/S and related cables.

Specifications

	FUNCTION	EAC-0945
Kernel	CPU	ATMEL AT91SAM9G45, ARM926EJ-S, 400MHz
	System RAM	64MB DDR2
	Flash	128MB (up to 1G MB)
	Graphic Chip	16-bit LCD controller by CPU
	Rtc	YES
	Watchdog Timer	YES
	Power Management	NO
	External Reset	H/W reset & S/W reset (by ADM706R)
I/O	UART	RS232 x6 (2x RS232 & 4 TTL optional), 4-wire x1 & 2-wire x4
	Ethernet LAN	10/100Mbps
	USB 2.0 Client	1
	USB 2.0 Host	2
	SD/MMC	1(4-wire)
	Touch	1(4-wire resistive type)
	System bus	no
	IIC interface	1
	SPI interface	1
	GPIO	12-pin 3.3V TTL level GPIOs
	IIS	1
	KEYPAD	8x8 matrix keypad expand via IIC interface(optional)
Multimedia	Graphic Chip	CPU internal 24-bit LCD controller
	Resolution	Max 1280×860、24bits (320 x 240 ~ 1280 x 860 as optional)
	LCD interface	16-bit TTL/16-bit LVDS connector
	Audio	Headphone out and Mic in
Power	Power input	5.0 VDC (+-5%) & 12.0 VDC (+-5%, for backlight)
	Power Consumption	TBD
Mechanical & Environment	Board Size	96x90MM
	Weight	TBD
	Operating Temperature	-20 ~ 70° C (-40 ~ 85° C by project base)
	Operating Humidity	5 ~ 95 % relative humidity, non-condensing

Embedall Inc

www.embedall.com

address: Room 12A06, Leizhen Building, No.40 Fuming Road, Futian District, Shenzhen, China

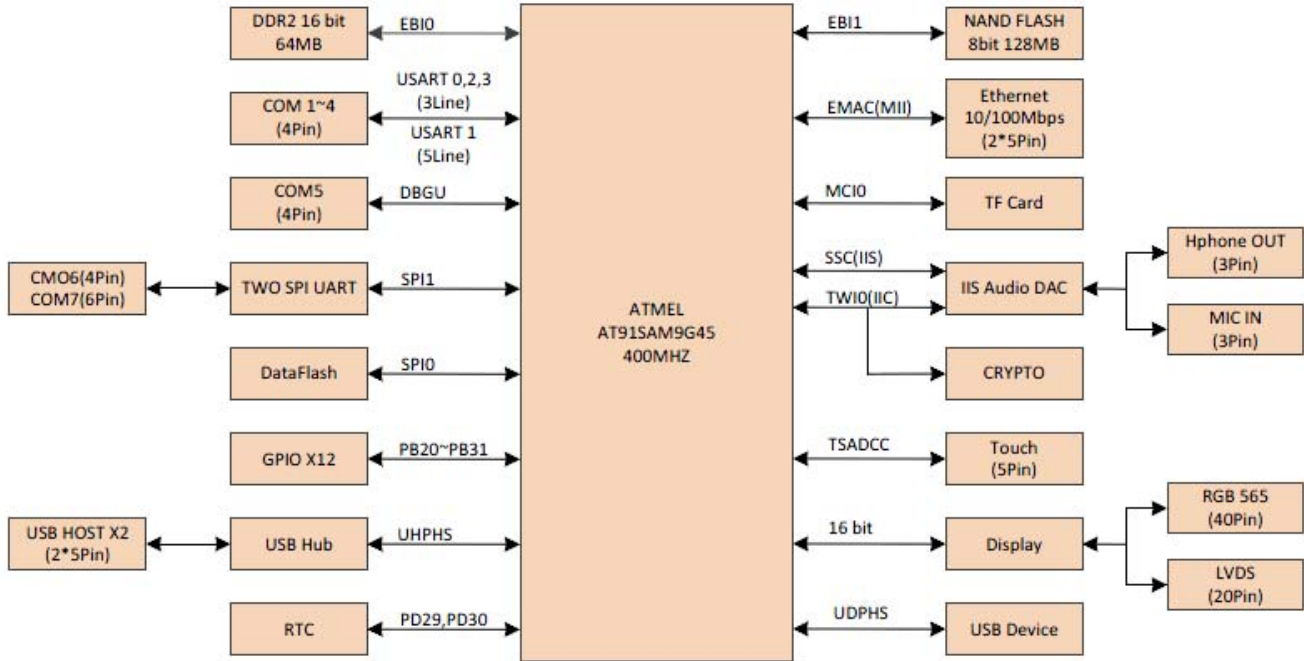
email: info@embedall.com fax: 0086-755-82523090

tel: 0086-755-82523090

Embedall Arm Single Board Computer Products

Other	RoHS	YES
	Certifications	CE/FCC Class A
	Software Support	Embedded Linux 2.6 (Win CE6.0 by project support)

Block Diagram



Ordering Information

Part No.	CPU	RAM	Flash Memory	RS232	LAN	USB Host	USB OTG	LCD/LVDS	video decoder	Touch	SD	IIC	SPI	size	Power Input	Operating temp.
EAC-0945-B1	At91sam9g45b	64m	128m	6xRS232	1	2	1	16-bit		yes	1	1	1	96x90mm	5.0v	-20-70
EAC-0945-B2	At91sam9g45b	64m	256m	6xRS232	1	2	1	16-bit		yes	1	1	1	96x90mm	5.0v	-20-70
EAC-0945-B3	At91sam9g45b	64m	128m	4xRS232 2xTTL	1	2	1	16-bit		yes	1	1	1	96x90mm	5.0v	-20-70
EAC-0945-B4	At91sam9g45b	64m	256m	4xRS232 2xTTL	1	2	1	16-bit		yes	1	1	1	96x90mm	5.0v	-20-70
EAC-0945-B5	At91sam9g45b	64m	128m	4xRS232	1	2	1	16-bit		yes	1	1	1	96x90mm	5.0v	-20-70
EAC-0945-B6	At91sam9g45b	64m	128m	6	1	2	1	16-bit		yes	1	1	1	96x90mm	5.0v	-40-85

Note:The product supports 16-bit LVDS LCD interface. the configuration of the product may be different because of LCD models, When you place an order,please give LCD models first before production.

Embedall Inc

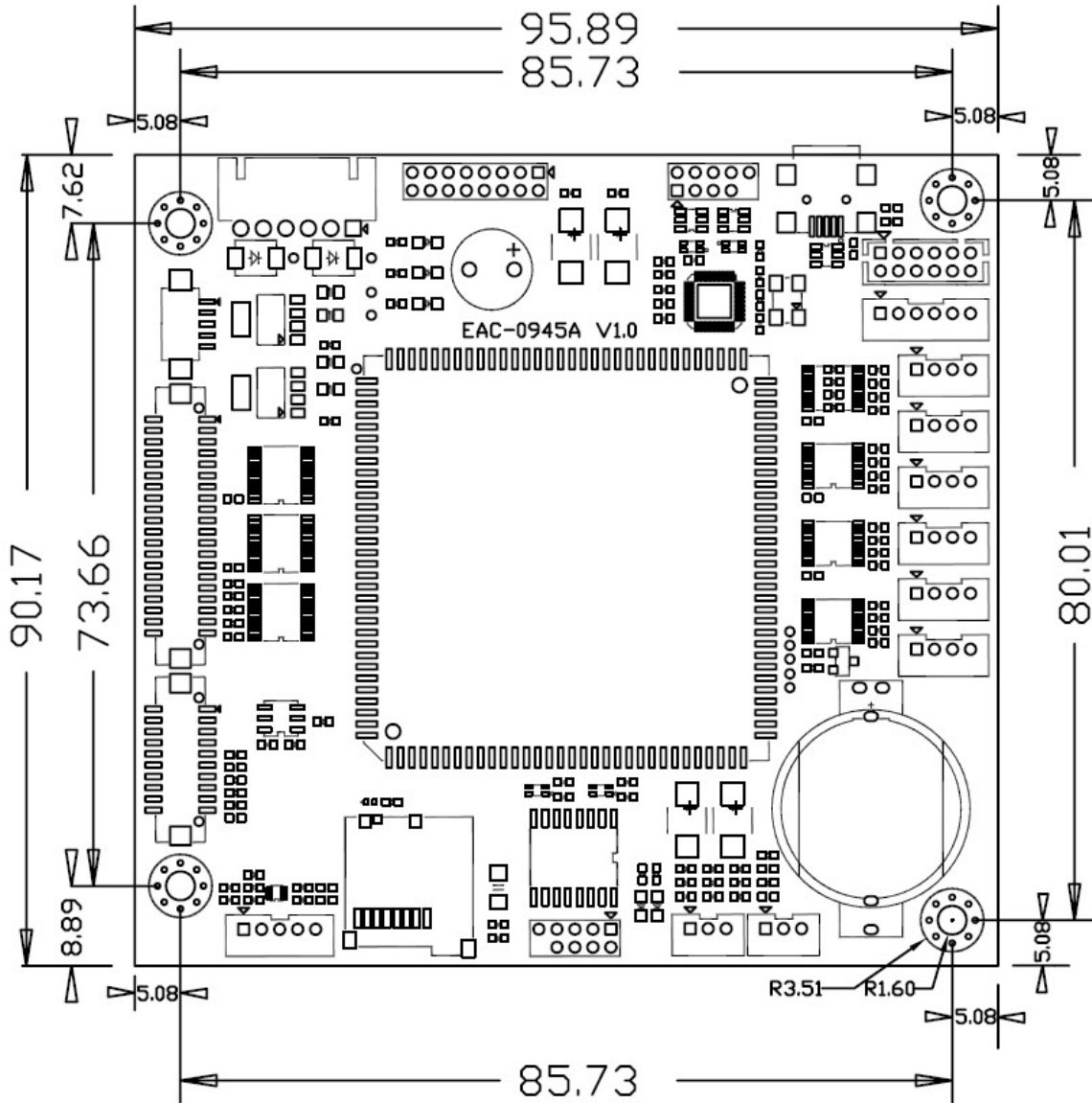
www.embedall.com

address: Room 12A06, Leizhen Building, No.40 Fuming Road, Futian District, Shenzhen, China

email: info@embedall.com fax: 0086-755-82523090

tel: 0086-755-82523090

Dimensions (mm)



Packing List

Company

EMBEDALL Inc, founded in 2004, is a focus on embedded ARM product development and services of high-tech companies. Mainly for industrial control, medical equipment industries to provide outstanding embedded products and services.

Address: Room 12A06, Leizhen Building, No.40 Fuming Road, Futian District, Shenzhen, China

Email: info@embedall.com

Tel: 0086-755-82523090

Fax :0086-755-82523090

Zip Code: 518033

Web site: www.embedall.com

Embedall Inc
www.embedall.com

address: Room 12A06, Leizhen Building, No.40 Fuming Road, Futian District, Shenzhen, China

email: info@embedall.com fax: 0086-755-82523090

tel: 0086-755-82523090