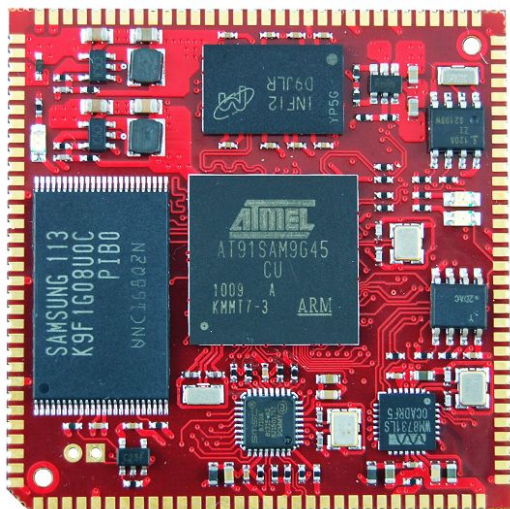


COM-9G45

Series of ARM computer on module



Features

- ARM926EJ-S CPU、400MHz Processor core
- 64MB DDR2 SDRAM, 128MB SLC NAND
- Interfaces: Ethernet, USB 2.0, USART, MicroSD, LCD/TFT, SPI, I/O ports
- WM8731L 24BIT AUDIO
- IS1208 RTC WITH BATTERY
- OS Linux2.6 /wince 6.0 pre-installed
- SIZE:45*45MM

Introduction

Industrial Design, I/O intensive COM

COM-9G45 Computer-on-Module (COM) integrates ARM ARM926EJ-S 400MHz ATMEL AT91SAM9G45B ultra low power SoC and I/O solution chips to be WindowsCE 6.0 and Linux 2.6 solution-ready! COM-9G45 with 3.3V I/O Voltage current and wide-range temperature support is specially designed for industrial applications.

Design-in Package Ensures Efficient Evaluation and Implementation

The Design-in Package not only includes all the necessary H/W boards, fixtures and LCD related cables, but also includes the Artcor-customized API, utility & reference codes. And of course, it includes all design related documentation including a white paper for detailed technical know-how.

LCD Kit: Includes the LCD, T/S and related cables.

Embedall Inc

www.embedall.com

address: Room 12A06, Leizhen Building, No.40 Fuming Road, Futian District, Shenzhen, China

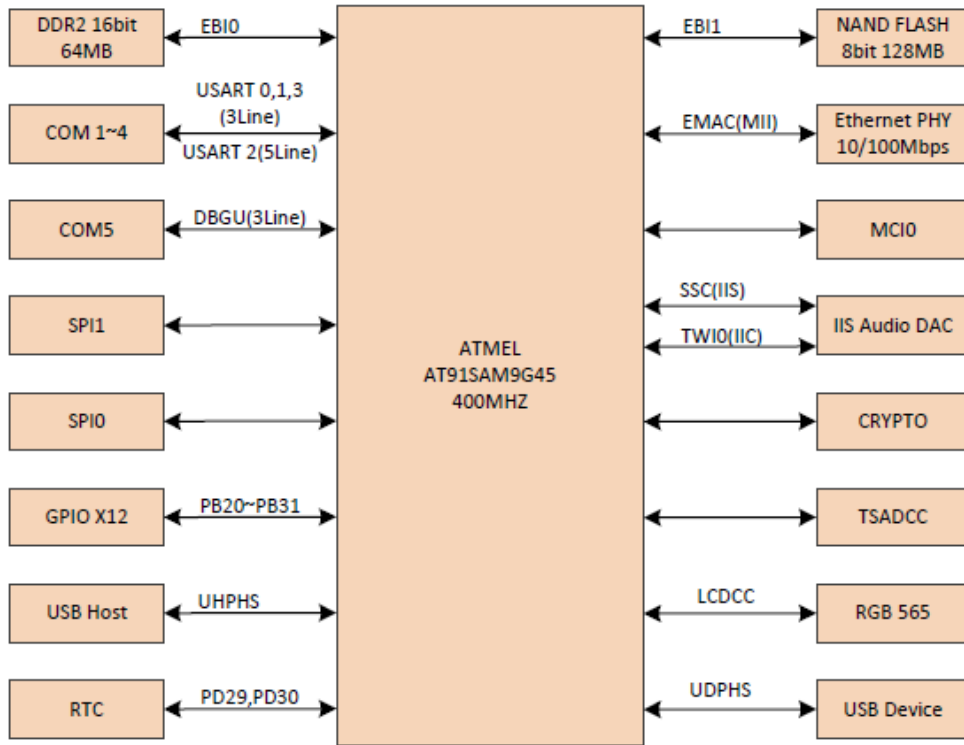
email: info@embedall.com fax: 0086-755-82523090

tel: 0086-755-82523090

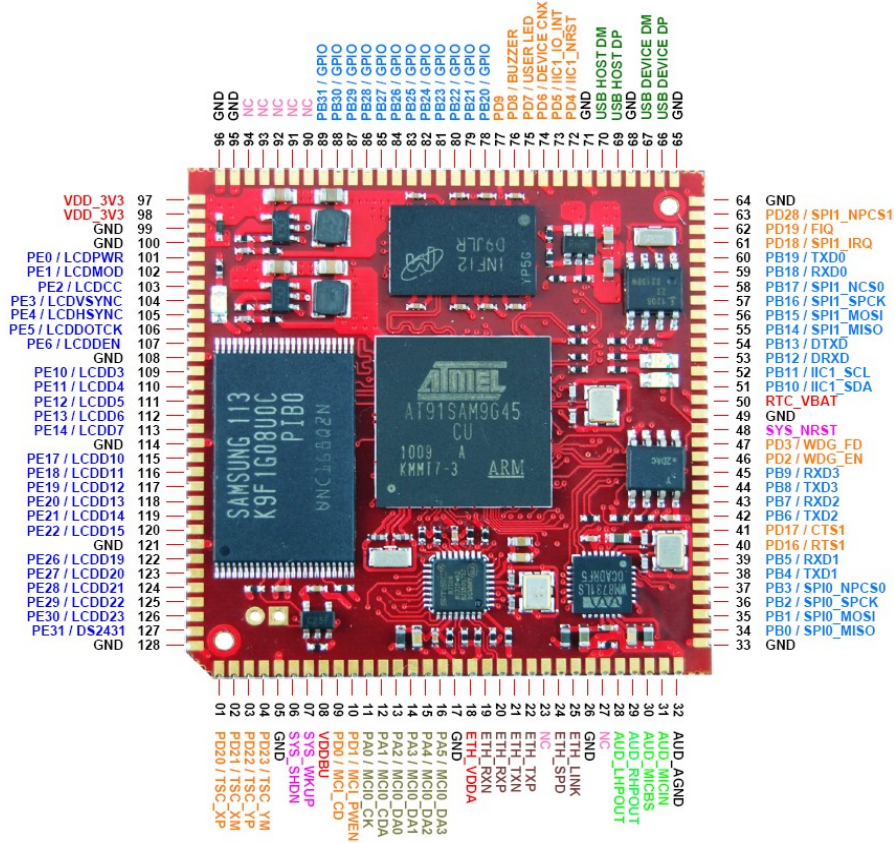
Specifications

	FUNCTION	COM-9G45
Kernel	CPU	ATMEL AT91SAM9G45, ARM926EJ-S, 400MHz
	System RAM	64MB DDR2
	Flash	128MB (up to 256MB)
	Graphic Chip	16-bit LCD controller by CPU
	Rtc	YES
	Watchdog Timer	YES
	Power Management	NO
	Reset	H/W reset & S/W reset (by register setting)
I/O (All interfaces with industrial TTL 3.3V Level)	UART	TTL level x5 (4-wire x1 & 2-wire x4)
	Ethernet LAN	10/100Mbps
	USB 2.0 Client	1
	USB 2.0 Host	1
	SD/MMC	1(4-wire)
	Touch	1(4-wire resistive type)
	System bus	no
	IIC interface	1
	SPI interface	1
	GPIO	12-pin 3.3V TTL level GPIOs
	IIS	1
Multimedia	Graphic Chip	CPU internal 24-bit LCD controller
	Resolution	Max 1280×860、24bits (320 x 240 ~ 1280 x 860 as optional)
	LCD interface	16-bit TTL
	Audio	Headphone out and Mic in
Power	Power input	3.3 VDC (+-5%) & 3.0 VDC (+-5%)
	Power Consumption	TBD
Mechanical & Environment	Size	45MM*45MM*3.2MM
	Operating Temperature	-20 ~ 70° C (-40 ~ 85° C by project base)
	Operating Humidity	5 ~ 95 % relative humidity, non-condensing
Other	RoHS	YES
	Certifications	CE
	Software Support	Embedded Linux 2.6 (WCE6.0 by project support)

Block Diagram



Pin Assignment



Embedall Inc

www.embedall.com

address: Room 12A06, Leizhen Building, No.40 Fuming Road, Futian District, Shenzhen, China

email: info@embedall.com

fax: 0086-755-82523090

tel: 0086-755-82523090

Company

EMBEDALL Inc, founded in 2004, is a focus on embedded ARM product development and services of high-tech companies. Mainly for industrial control, medical equipment industries to provide outstanding embedded products and services.

Address: Room 12A06, Leizhen Building, No.40 Fuming Road, Futian District, Shenzhen, China

Email: info@embedall.com

Tel: 0086-755-82523090

Fax : 0086-755-82523090

Zip Code: 518033

Web site: www.embedall.com

Embedall Inc

www.embedall.com

address: Room 12A06, Leizhen Building, No.40 Fuming Road, Futian District, Shenzhen, China

email: info@embedall.com fax: 0086-755-82523090

tel: 0086-755-82523090